

# SQream DB Connectors

SQream Technologies

2018-06-28

# Table of Contents

1. Download the drivers .....	1
1.1. Recommended method - Windows installer (x64) .....	1
1.2. Other operating systems .....	1
2. Installing and using the drivers .....	1
2.1. Installing using the Windows installer .....	1
Copyright .....	5

SQream DB has native connectors for JDBC and ODBC.

If you have not found the connector you are interested in, please contact SQream support.

# 1. Download the drivers

## 1.1. Recommended method - Windows installer (x64)

There is a full Windows installer, that automatically installs the latest JDBC and ODBC drivers, as well as the necessary prerequisites (like Java 8.0).



The Windows installer automatically creates a sample DSN. See the [Installing using the Windows installer](#) segment for more information.

- [Click here to download the Windows installer](#)

## 1.2. Other operating systems

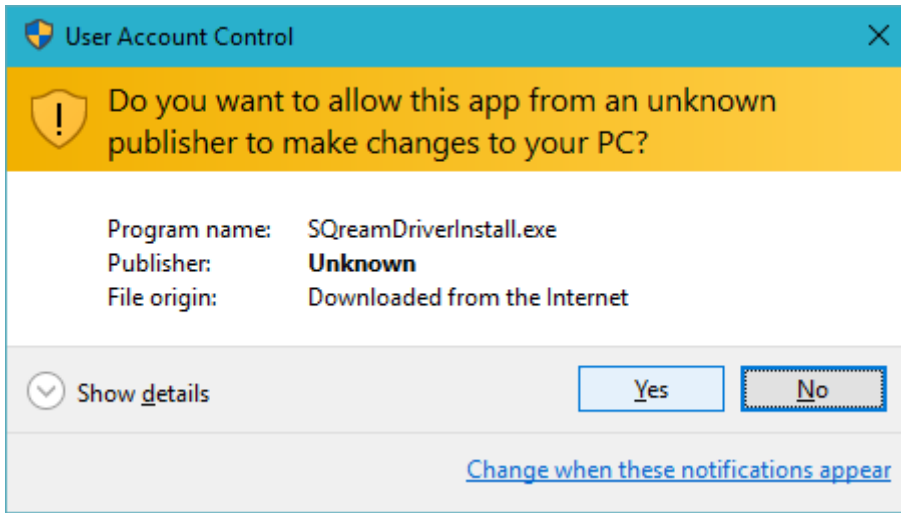
If you are on a different operating system, you can download a '.zip' file that contains the JDBC jars and ODBC dll.

- [Click here to download the drivers ZIP package](#)
- [Click here to download just the JDBC jars ZIP package](#)

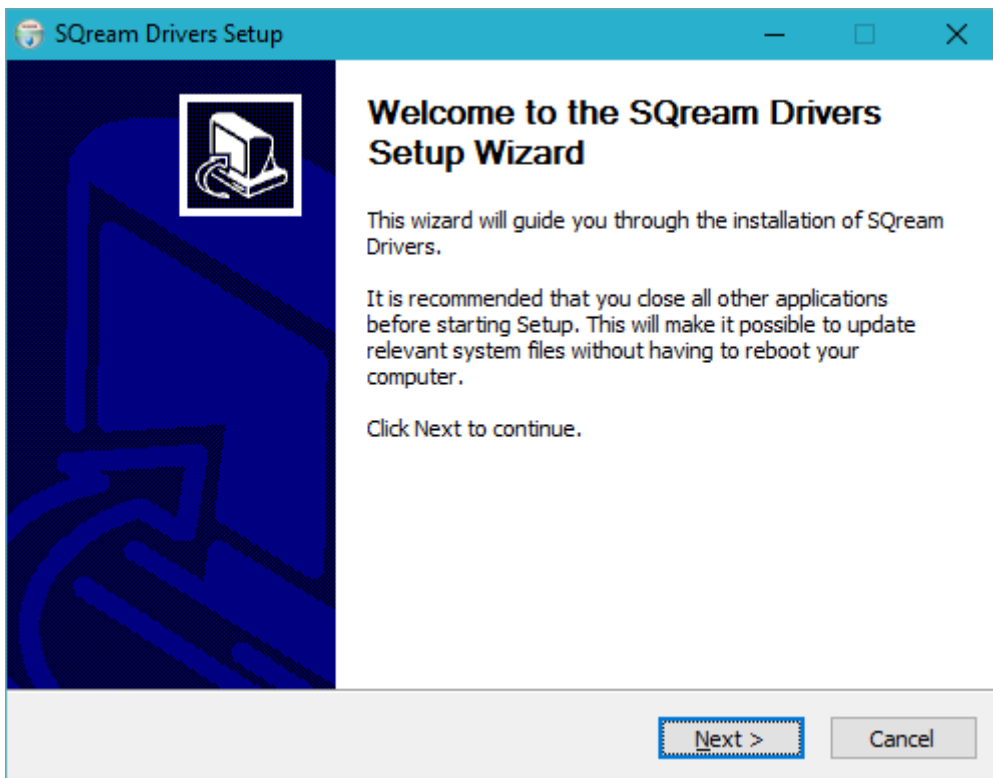
# 2. Installing and using the drivers

## 2.1. Installing using the Windows installer

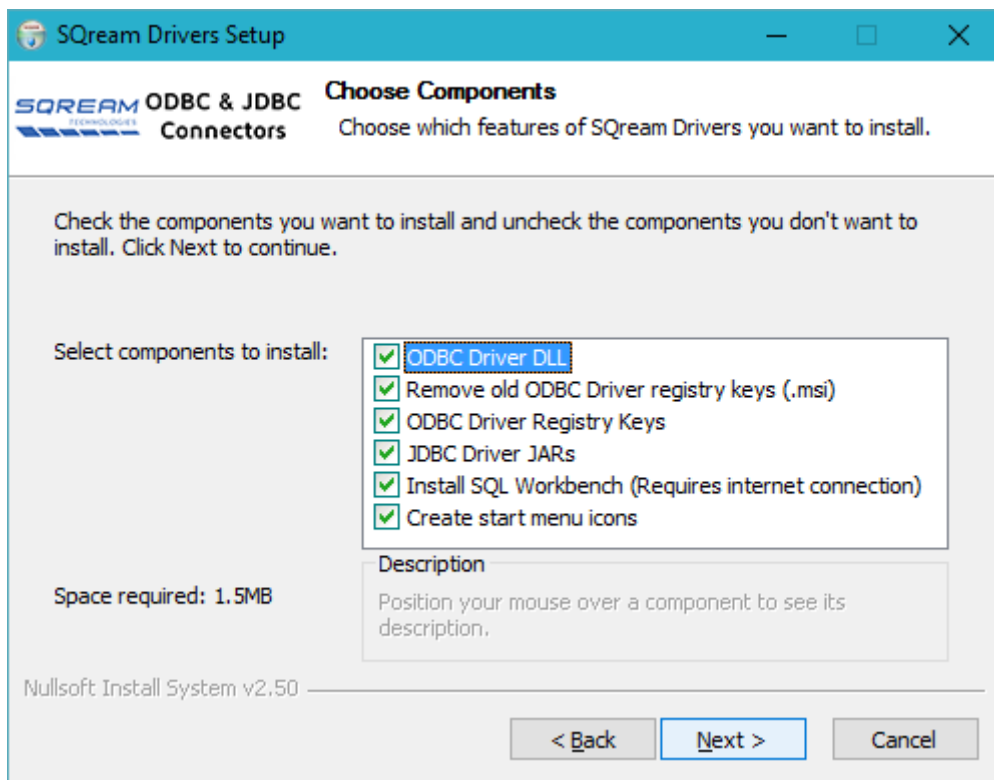
1. Download the SQream driver package from the link above. This will download the latest version.  
If you know your instance is running a different version, please contact support for the correct link.
2. Run the installer and follow the steps in the Wizard as you see below:
3. The User Account Control window may open up. Click Yes to continue the installation.



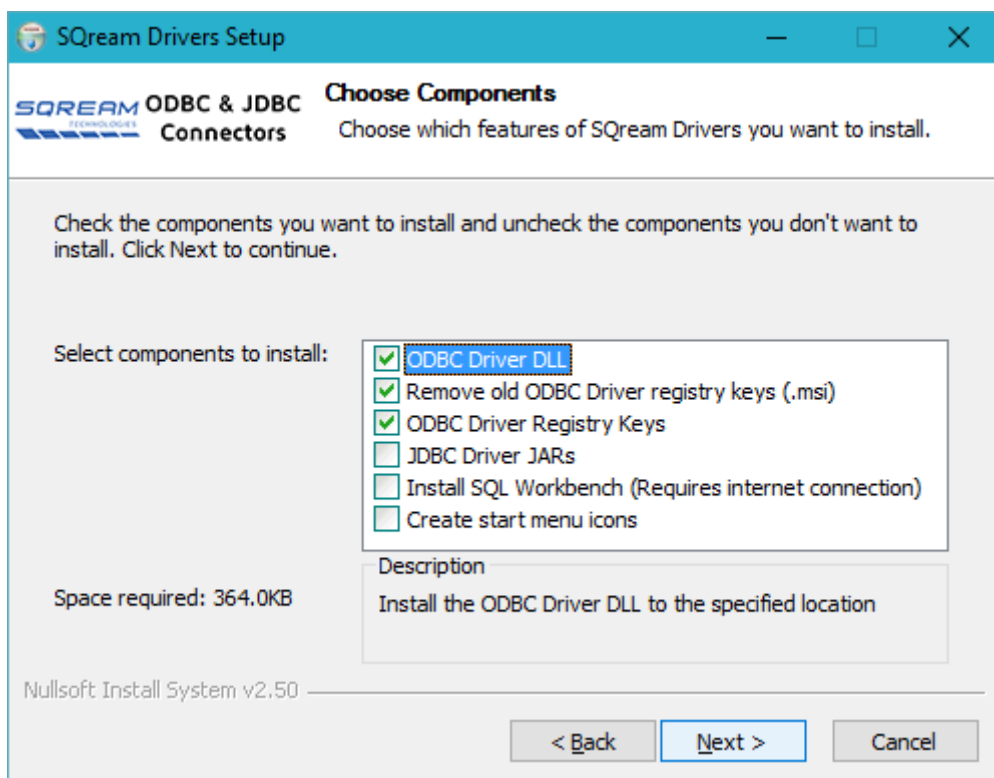
4. Follow the installation instructions




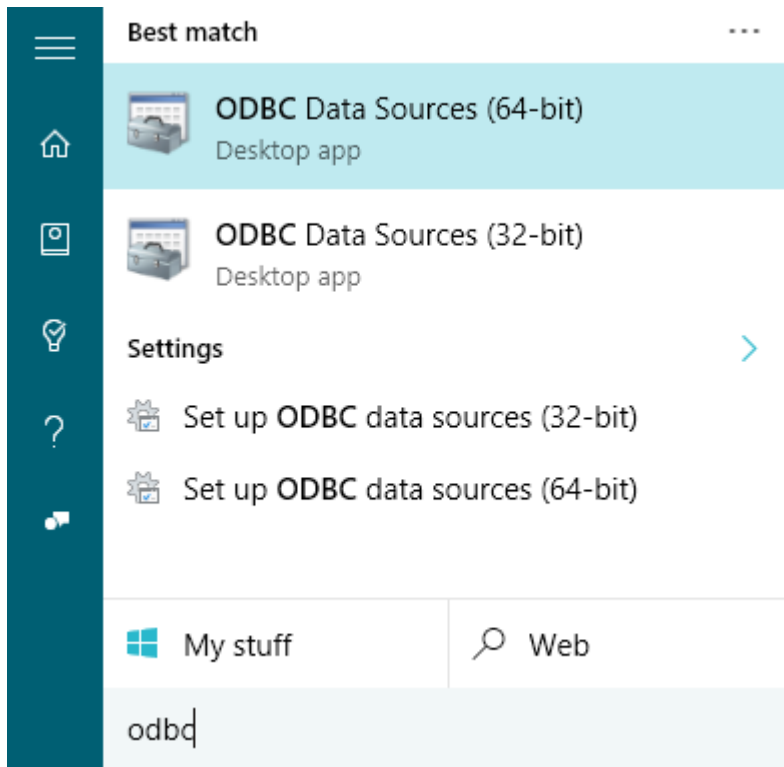
Choose the components you wish to install. If you have a previous version installed, keep **Remove old ODBC ODBC Driver Registry Keys** selected.



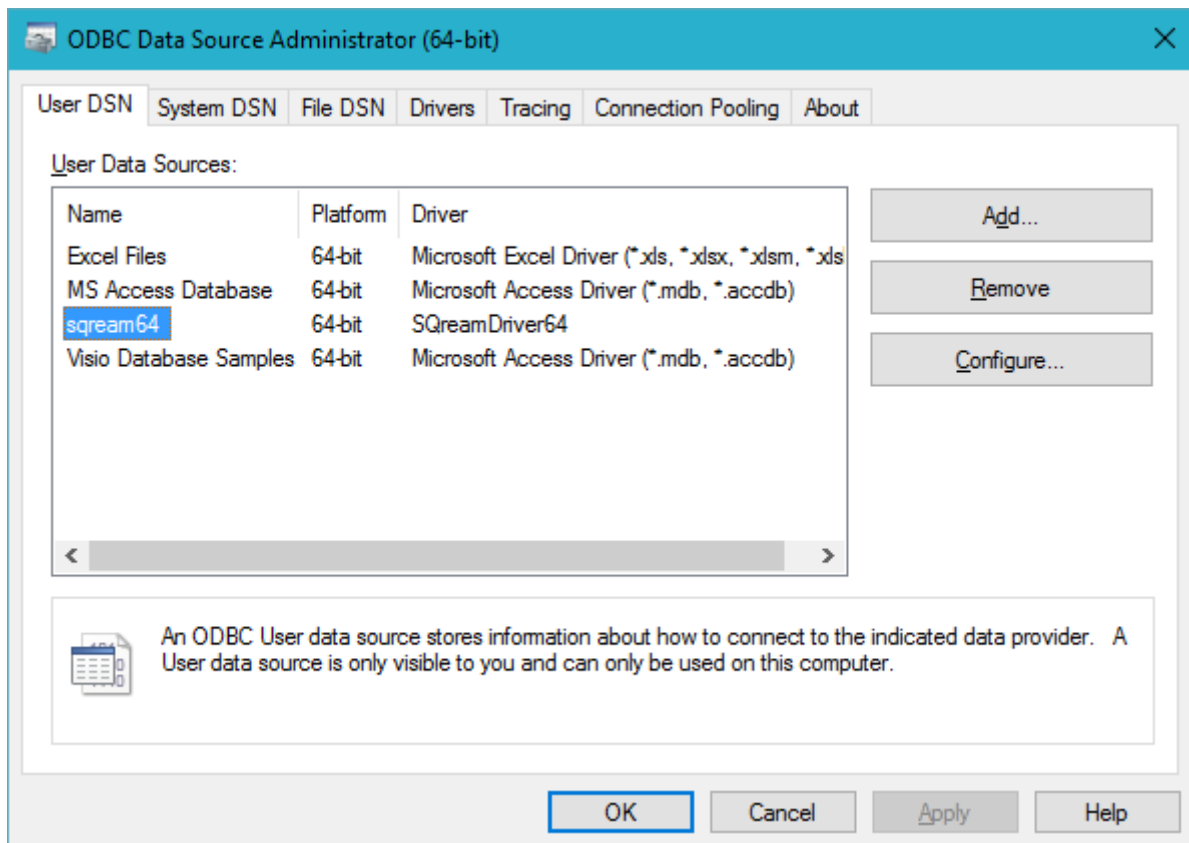
To install only the ODBC drivers, select only the top 3 components:



- Once the installer finishes, enter the ODBC Data Sources window in order to properly set up your connection:  
Open up the Windows menu by clicking the  button and typing **ODBC**.  
Pick the **ODBC Data Sources** matching your system (usually 64-bit)



6. Locate the correct DSN. The installer automatically added a DSN called **sqream64**



7. Click Configure and enter the correct server details in the DSN editing screen, as given to you.

The image shows a dialog box titled "Scream Driver - Connection". It contains the following fields and values:

Field	Value
DSN	scream64
Server	192.168.0.1
Port	5000
Database	master
Username	scream
Password	•••••••

Buttons: Done, Cancel

8. Save the connection settings by clicking **[ Done ]** and then **[ OK ]**. You can now test the ODBC installation with any tool that supports ODBC.

## Copyright

**Copyright © 2010-2018. All rights reserved.**

This document is provided for information purposes only and the contents hereof are subject to change without notice. This document is not warranted to be error-free, nor subject to any other warranties or conditions, whether expressed orally or implied in law, including implied warranties and conditions of merchant- ability or fitness for a particular purpose.

We specifically disclaim any liability with respect to this document and no contractual obligations are formed either directly or indirectly by this document.

This document may not be reproduced in any form, for any purpose, without our prior written permission.